



Firebird

Canadian Wildfire Modelling to protect Tomorrow, Today.

Wildfires are out of control.

They are the most **economically significant** Canadian natural disaster.

60%

Of all Canadian forest hectares burned this decade occurred in 2023-24

95%

Of annual costs (\$2bn) are from large-scale fires - 3% of all incidents



Minimizing damages and
suppression costs



Protecting communities
and Canadian nature



Reduction of Carbon
Emissions



AI-powered, predictive wildfire intelligence.

We allow stakeholders to take ~~reactive~~ **proactive** measures

How Firebird Works

We're equipping our customers with an **advanced, versatile** risk map using Machine/Deep Learning.



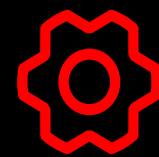
ROBUST

Over 8 million data points via 40+ Satellite and Ground features



ADAPTABLE

Forecasts range from a few days to entire seasons



FOCUSED

Spatial Resolutions of

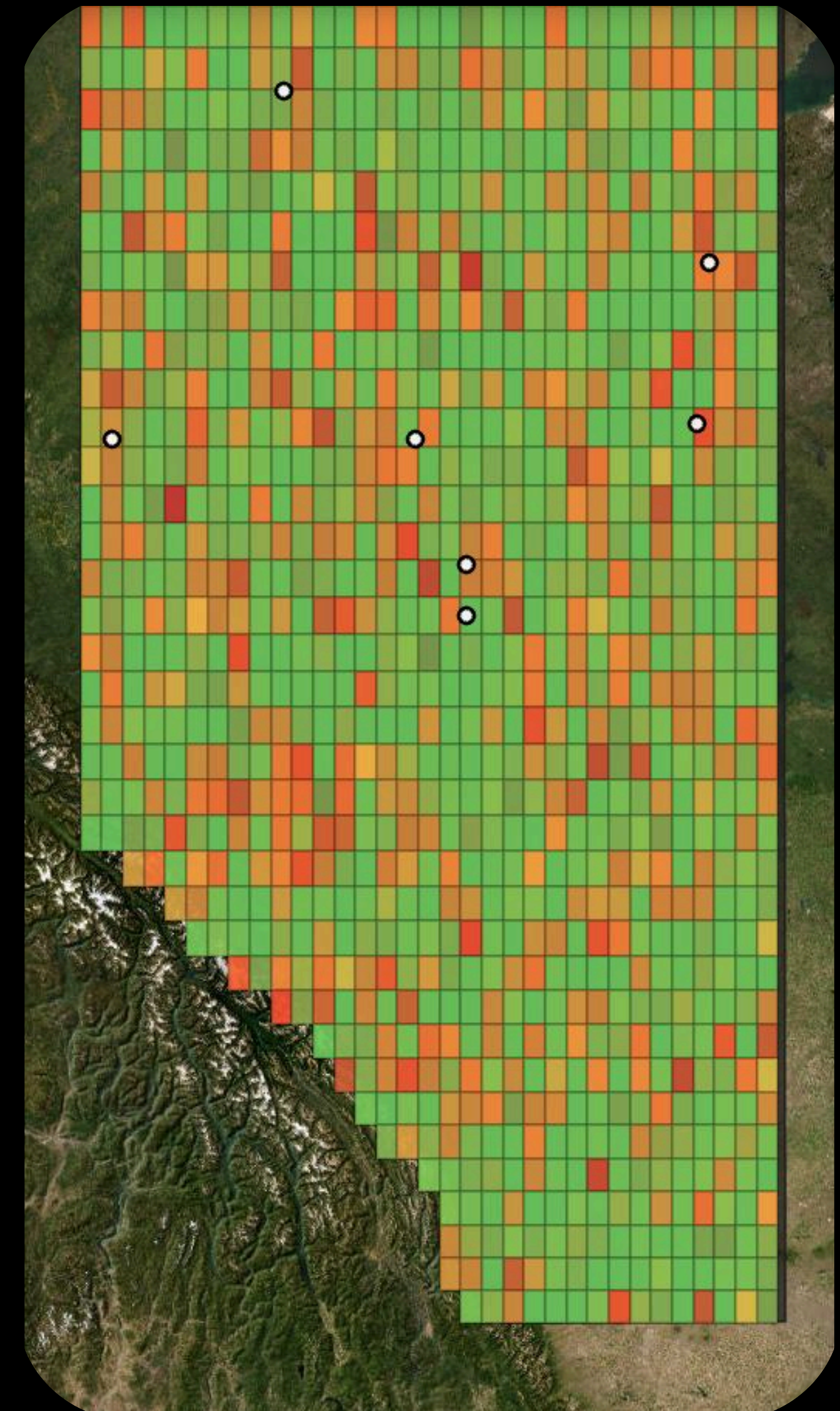
10 km²



RELIABLE

Accuracies recorded of up to

84%



Business Model Canvas

Key Partners

- Data Providers (government & private)
- Model Compute and Application Hosting Providers

Key Activities

- Model development and updates
- Application Maintenance

Key Resources

- Data
- Model & Platform IP
- Data Storage Infrastructure

Value Propositions

- Wildfire risk foresight enabling fire management
- Operational proactiveness providing high economic returns via infrastructure protection
- Fire season risk analysis and consequential risk insight

Customer Relationships

- SaaS relationships maintained by dedicated account manager

Channels

- Forecast tooling integrated into decision makers' workflows

Customer Segments

- National, Provincial, Municipal Govs
- Natural Resources Agencies/Companies
- Real Estate Developers
- Telecommunications
- Mining
- Forestry/Logging

Cost Structures

- Data APIs
- Application Infrastructure (database, hosting)
- R&D costs

Revenue Streams

- Enterprise licenses to Government clients
- A la carte/usage based billing with smaller B2B clients

Our Market and Sales



Model Showcases and Demos

- Feedback Collection
- ROI data

Pilot Testing for 2026 Wildfire Season

- Demo site pilots
- Early impact case study

Commercial Launch

- Open Paid Pilots with Municipalities/
B2B demographics
- Customer Onboarding

Dual pricing to ensure customers align costs with deployment scale and usage patterns.



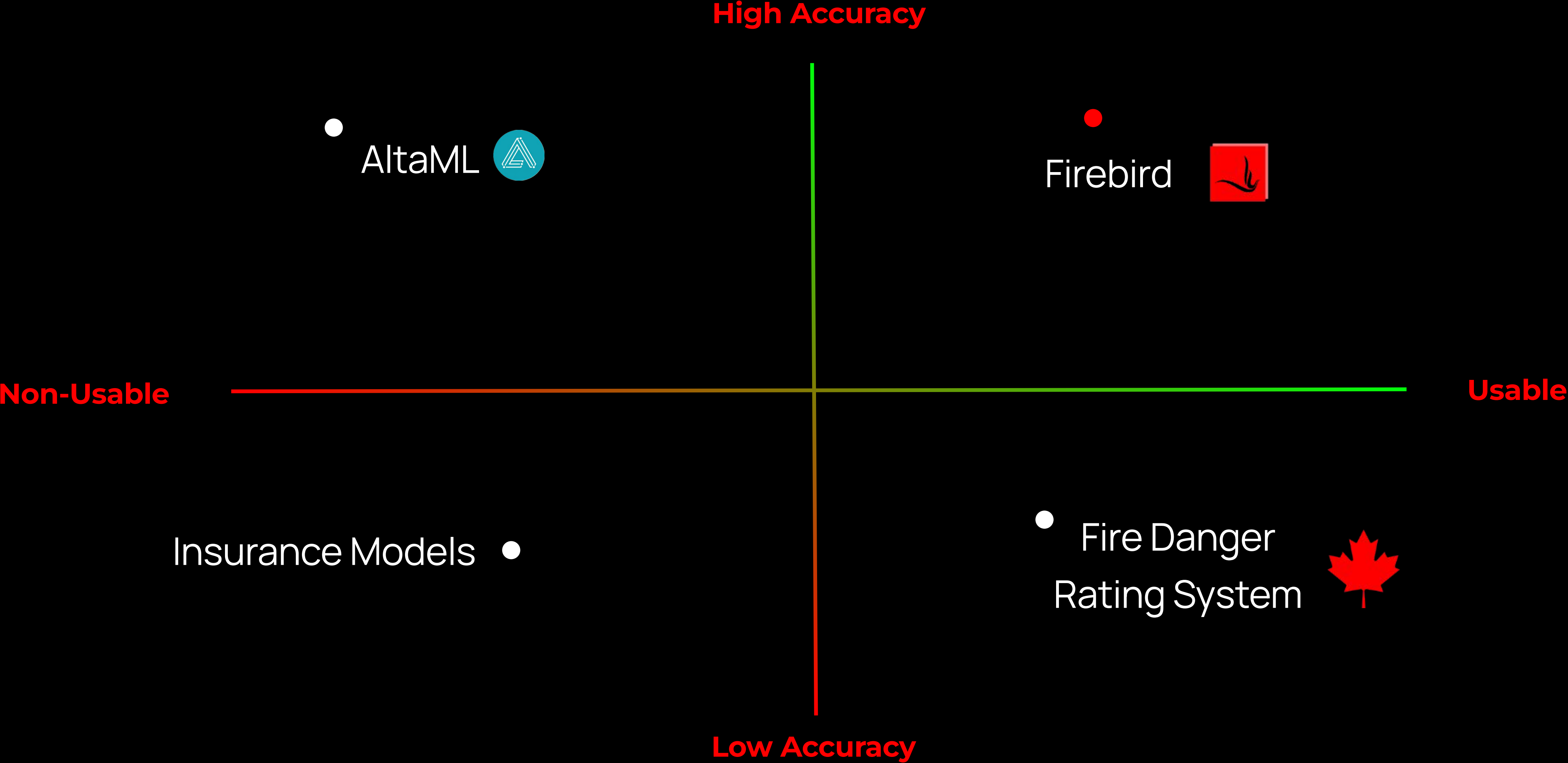
Enterprise License: Annual, unlimited API access



Pay-Per-Call: Metered usage with tiered volume discounts

Better Accuracies, Exponential Impact.

 Our modelling software **identifies and addresses** cross-industry pain points.



Our Founding Team



Ibraheem Azhar

CTO, UWaterloo
Computer Science



Dante Maggiotto

CEO, UWaterloo SciBus



J Romero

COO, UWaterloo Physics



Teodora Vujovic

Senior ML Engineer,
UWaterloo Applied Math



May 2025

- v1.0 Model Completion

July 2025

- Acquisition of private B.C Data pipelines for provincial model

Beyond

- Provincial Pilot Testing

June 2025

- Deep Learning Model (v1.1) validation of 90+% scoring

August 2025

- Grant + Low Value SAFE round

Milestones

Phased rollout delivers pilot validation, provincial deployment, and targeted funding to **rapidly and sustainably** scale our wildfire-risk platform.

Status/Timeline

| | May | June | July | August |
|---------------------------------------|--|---|---|---------------------------------------|
| Products | Product Sprint Planning | Building front-end & Data Infrastructure | Developing UI Tooling | Web Application-Closed Alpha Release |
| Services | Form presence via website and LinkedIn | Cultivate interest for closed alpha release | → | Stimulate engagement using blogs |
| Relationships & Networking | Customer Validation with Relevant Stakeholders | Establish connections with VC firms | Host stakeholder demos & collect feedback | Begin outreach for 2026 season pilots |

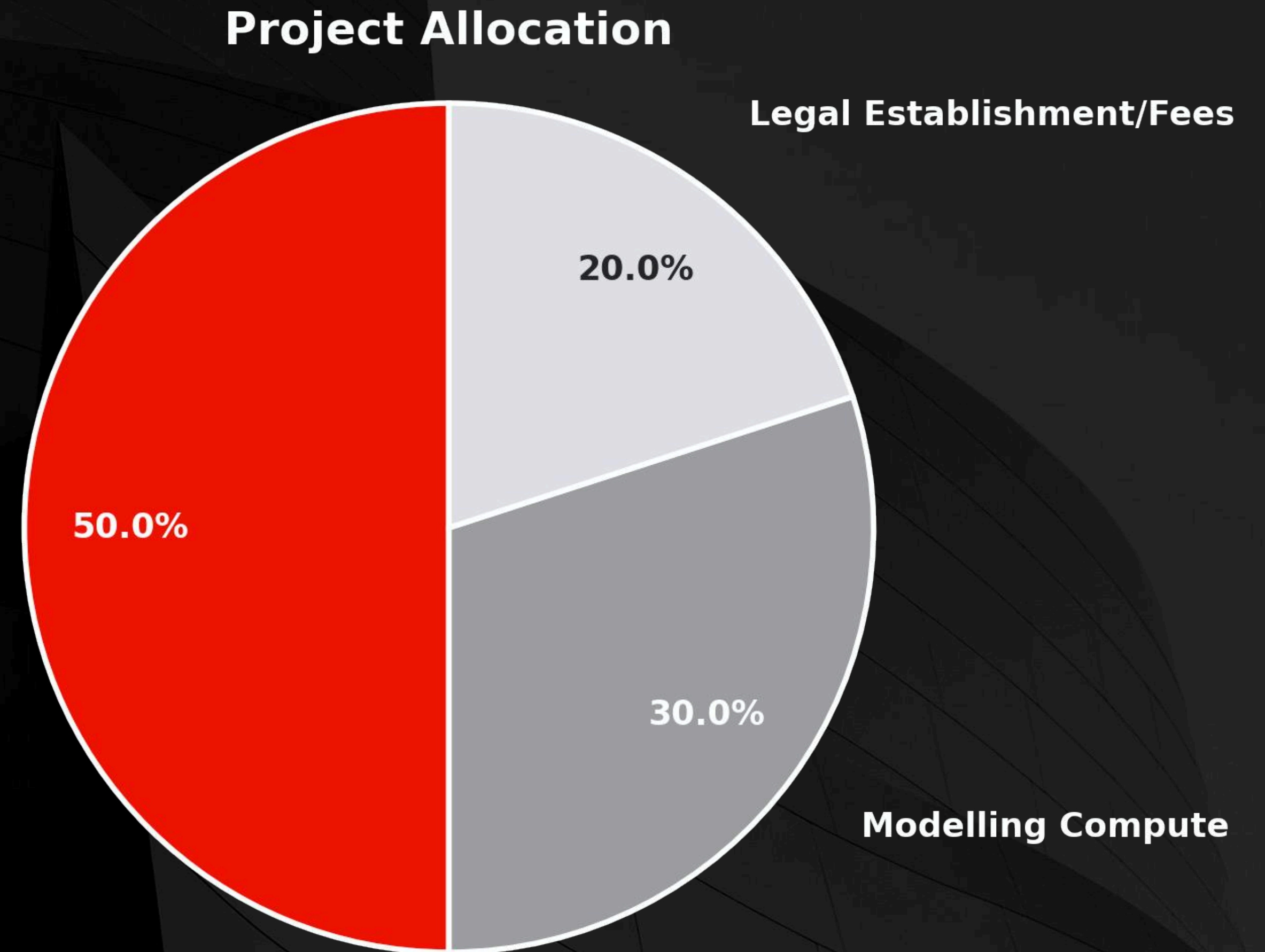
Ready to Enhance Wildfire Preparedness?

\$5K

Funding Allocation



Data Infrastructure



Supported By:

